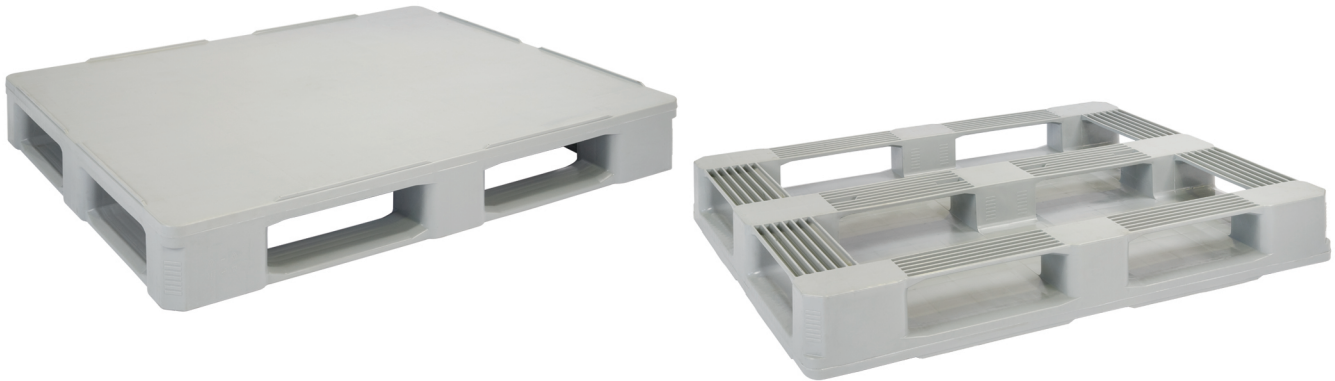


▶ HP1210/5R/3P

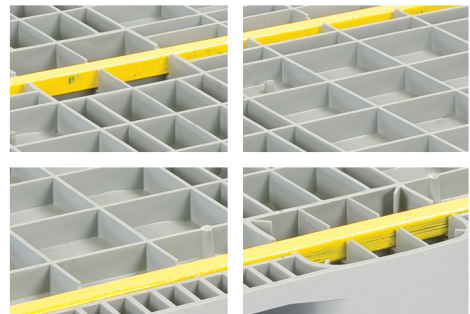
Hygienic Plastic Pallet (Reinforced)



Specifications:

| | |
|--|------------------------------------|
| Material | HDPE/PP Inj. Grade + UV Stabilizer |
| Dimension | 1200 x 1000 x 160 mm |
| Static Load | 7500 Kg |
| Dynamic Load | 1750 Kg |
| Racking Load | 1750 Kg |
| Pallet Weight | 27.5 Kg (±3%) |
| 40' HC Cntr/88 m ³ TRK Capacity | 364 / 428 Pcs |

More details:



Properties:

- Single surface
- Closed solid top deck
- 3 reinforcement profiles
- 7 mm safety rims
- 5 Skid runners
- 4-way entry
- Forklift / Hand-jack compatible
- Welded
- Stackable

Customization:

- Any standard RAL color
- Anti-slip strips option (2-4 Pcs)
- Embossing logo
- Printing logo
- Safety rims

