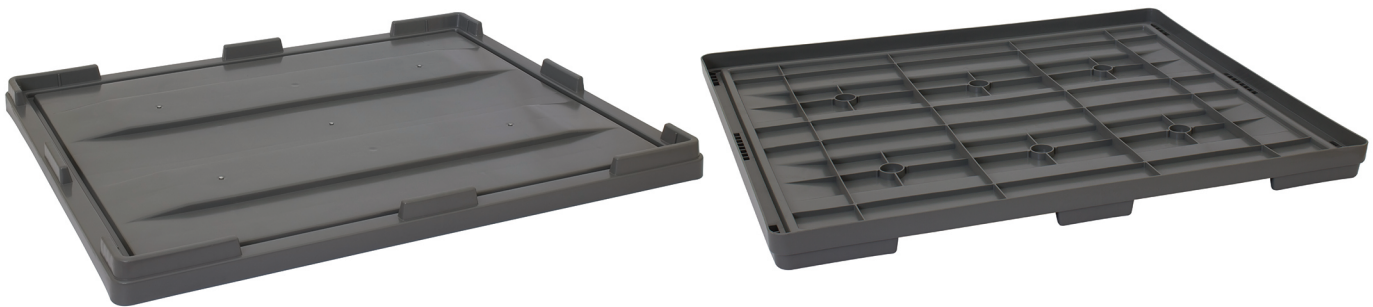


# ▶ BPL1210

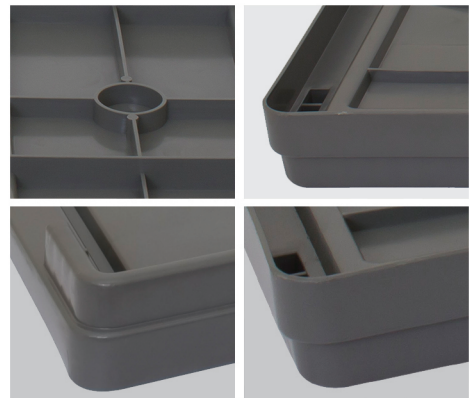
## Plastic Lid of Box Pallet



### Specifications:

Material	HDPE Inj. Grade + UV Stabilizer
External Dimension	1210 x 1010 x 80 mm
Internal Dimension	1200 x 1000 x 40 mm
Net Weight	7.5 Kg (±3%)
Interior Volume	x
Static Load	x
Dynamic Load	x
Racking Load	x
40' HC Cntr/88 m <sup>3</sup> TRK Capacity	1323 / 1638 Pcs

### More details:



### Properties:

- Solid
- 40 mm Lips
- Round corners
- One shot
- Stackable

### Customization:

- Any standard RAL color
- Embossing logo

