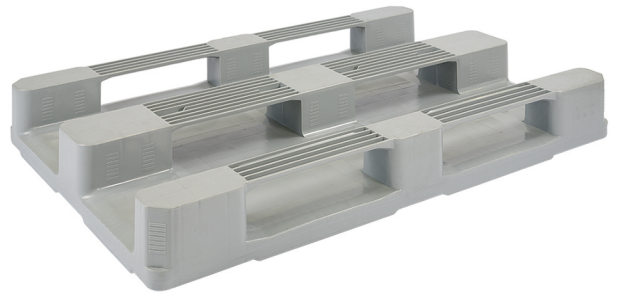
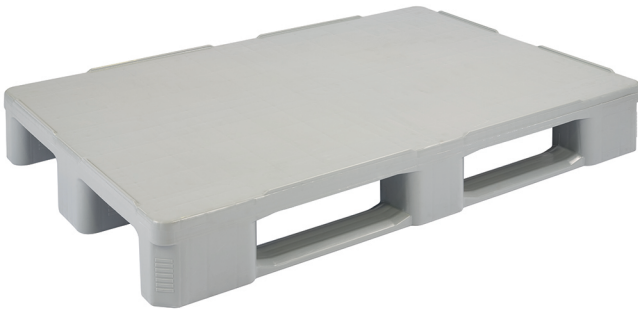


# ▶ HP1208/3R/3P

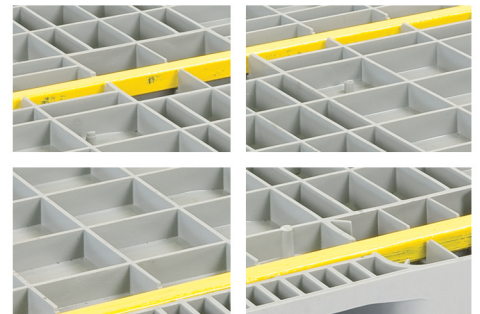
## Hygienic Plastic Pallet (Reinforced)



### Specifications:

Material	HDPE/PP Inj. Grade + UV Stabilizer
Dimension	1200 x 800 x 160 mm
Static Load	7500 Kg
Dynamic Load	1500 Kg
Racking Load	1500 Kg
Pallet Weight	22 Kg (±3%)
40' HC Cntr/88 m <sup>3</sup> TRK Capacity	550 / 644 Pcs

### More details:



### Properties:

- Single surface
- Closed solid top deck
- 3 reinforcement profiles
- 7 mm safety rims
- 3 Skid runners
- 4-way entry
- Forklift / Hand-jack compatible
- Welded
- Stackable

### Customization:

- Any standard RAL color
- Anti-slip strips option (2-4 Pcs)
- Embossing logo
- Printing logo
- Safety rims

